



2016

	3
	3
	3
2016	6
	6
	7
	9
2016	12
	12
	13
	14
	15
	16
	19
2016	20
	20
.....	21
	21
	22
.....	23
	24

“ ”

.....24

.....24

.....25

“

”

”

”

”

”

——”

”

”

”

1999

——

			386860		264970.14	，
	4			13000		785
		235		285		
2			2		14	
6			13			
	2016	3	18			
				3	29	88

”

”

2016

2016

2016

BIM

6

3D

5

"

"

" 321"

2016

" 2016

"

2016

"

.

.

"

8

"

4

"

20

2013

2014

2015

9

2016

2883

2016

2

2

3

3

3

8

11

2016

10

BIM

BIM

BIM

BIM5D

BIM

"

"

				2016		
		300				
	2016					150
	1729				60	
6200					100	2016 6
21		"			"	
	10		2016			
2				3		
	3		1	"		" 1
	16				8	

		20
		48
		31
		33
		280
		30
		4
		1
		51
		20
		118
		18
		6
		12
		96
		10
		9
		7
		258
		20
		29
		27

2-1

1
2016 3434 3321
82 25 96.71% 2015 12 15
2-2

				%
3434	3321	82	25	96.71

2-2 2016

2	2-3		
			96.71% (3321/3434)
1			100.00% (118/118)
			100.00% (12/12)
			100.00% (96/96)
			100.00% (10/10)
2			99.67% (302/303)
			100.00% (6/6)
			100.00% (159/159)
			100.00% (112/112)
3			96.15% (25/26)
			99.48% (191/192)
			100.00% (47/47)
			100.00% (17/17)
4			99.22% (127/128)
			98.68% (75/76)
			100.00% (20/20)
			100.00% (29/29)
5			96.30% (26/27)
			97.81% (268/274)
			100.00% (9/9)
			100.00% (7/7)
6			97.67% (252/258)
			97.20% (208/214)
			100.00% (1/1)
			100.00% (18/18)
			100.00% (6/6)
			98.31% (116/118)
			95.00% (19/20)
7			94.12% (48/51)
			97.13% (169/174)
			100.00% (42/42)
			100.00% (20/20)
			100.00% (33/33)
			96.77% (30/31)
8			91.67% (44/48)
			96.97% (128/132)
			100.00% (8/8)
			100.00% (25/25)

			97.44% (76/78)
			90.48% (19/21)
9			96.79% (634/655)
			97.73% (86/88)
			97.71% (128/131)
			96.43% (27/28)
			96.32% (393/408)
10			96.18% (302/314)
			100.00% (4/4)
			96.67% (29/30)
			96.07% (269/280)
11			95.94% (449/468)
			100.00% (24/24)
			100.00% (18/18)
			100.00% (22/22)
			100.00% (73/73)
			94.26% (312/331)
12			92.80% (477/514)
			100.00% (34/34)
			98.95% (188/190)
			92.50% (37/40)
			87.20% (218/250)

2-3 2016

1
2016
2823
635 18.49%
6.09% 187 5.45% 47 1.37%
46 1.34% 28 0.82% 2-4

		%
	2823	82.21
	635	18.49
	209	6.09
	187	5.45
	47	1.37
	46	1.34

	28	0.82
	17	0.50
	14	0.41
	14	0.41
	12	0.35
	9	0.26
	9	0.26
	4	0.12

2-4 2016

8.75%

"

"

2016

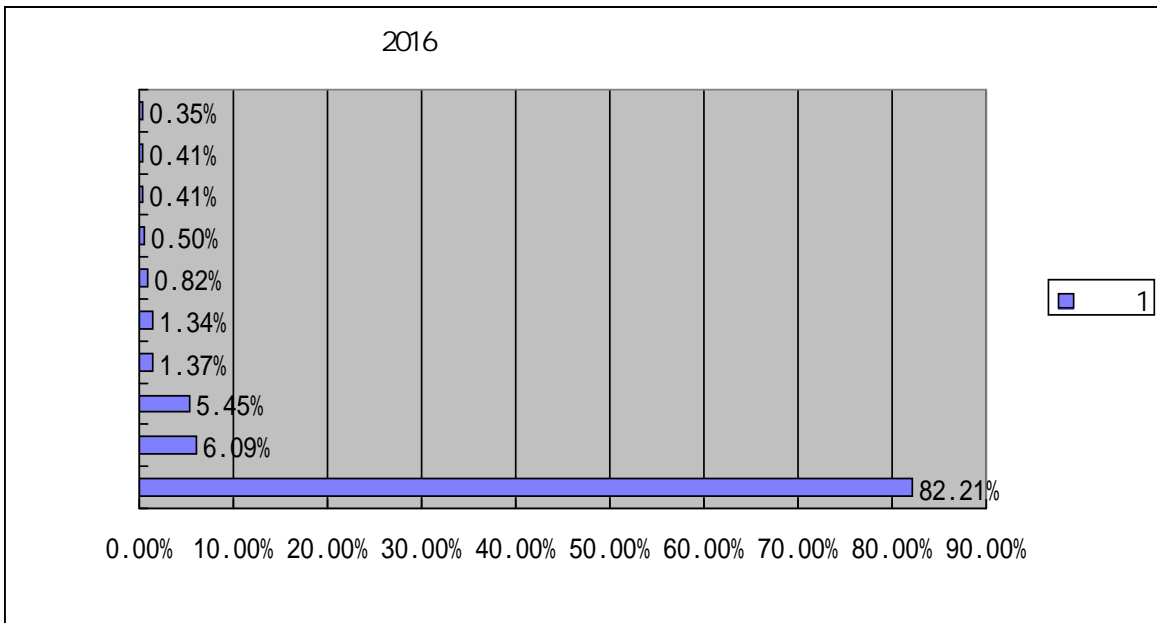
2-5

2-1

	2016	2016	2015	2014	
	2823	82.21%	73.48%	78.80%	8.73%
	209	6.09%	7.30%	5.24%	-1.22%
	187	5.45%	4.75%	4.65%	0.69%
	47	1.37%	2.10%	1.46%	-0.73%
	46	1.34%	2.34%	2.29%	-1.00%
	28	0.82%	4.89%	3.48%	-4.08%
	17	0.50%	0.17%	0.40%	0.32%
	14	0.41%	0.65%	0.40%	-0.25%
	14	0.41%	0.34%	0.28%	0.06%
	12	0.35%	2.45%	0.77%	-2.10%
	9	0.26%	0.21%	0.18%	0.06%
	9	0.26%	0.41%	0.30%	-0.15%
	4	0.12%	0.00%	0.14%	0.12%
	3	0.09%	0.14%	0.26%	-0.05%
	2	0.06%	0.34%	0.45%	-0.29%
	2	0.06%	0.07%	0.12%	-0.01%
	2	0.06%	0.00%	0.02%	0.06%
	1	0.03%	0.00%	0.06%	0.03%
	1	0.03%	0.03%	0.04%	-0.01%
	1	0.03%	0.03%	0.12%	-0.01%
	1	0.03%	0.03%	0.00%	-0.01%

	1	0.03%	0.10%	0.24%	-0.07%
	1	0.03%	0.00%	0.06%	0.03%
	0	0.00%	0.00%	0.04%	0.00%
	0	0.00%	0.00%	0.02%	0.00%
	0	0.00%	0.03%	0.02%	-0.03%
	0	0.00%	0.03%	0.04%	-0.03%
	0	0.00%	0.00%	0.00%	0.00%
	0	0.00%	0.03%	0.00%	-0.03%
	0	0.00%	0.03%	0.06%	-0.03%
	0	0.00%	0.00%	0.04%	0.00%

2-5 2016



2-1 2016

2016

2016

16.57% 15.73% 12.06% 10.80%

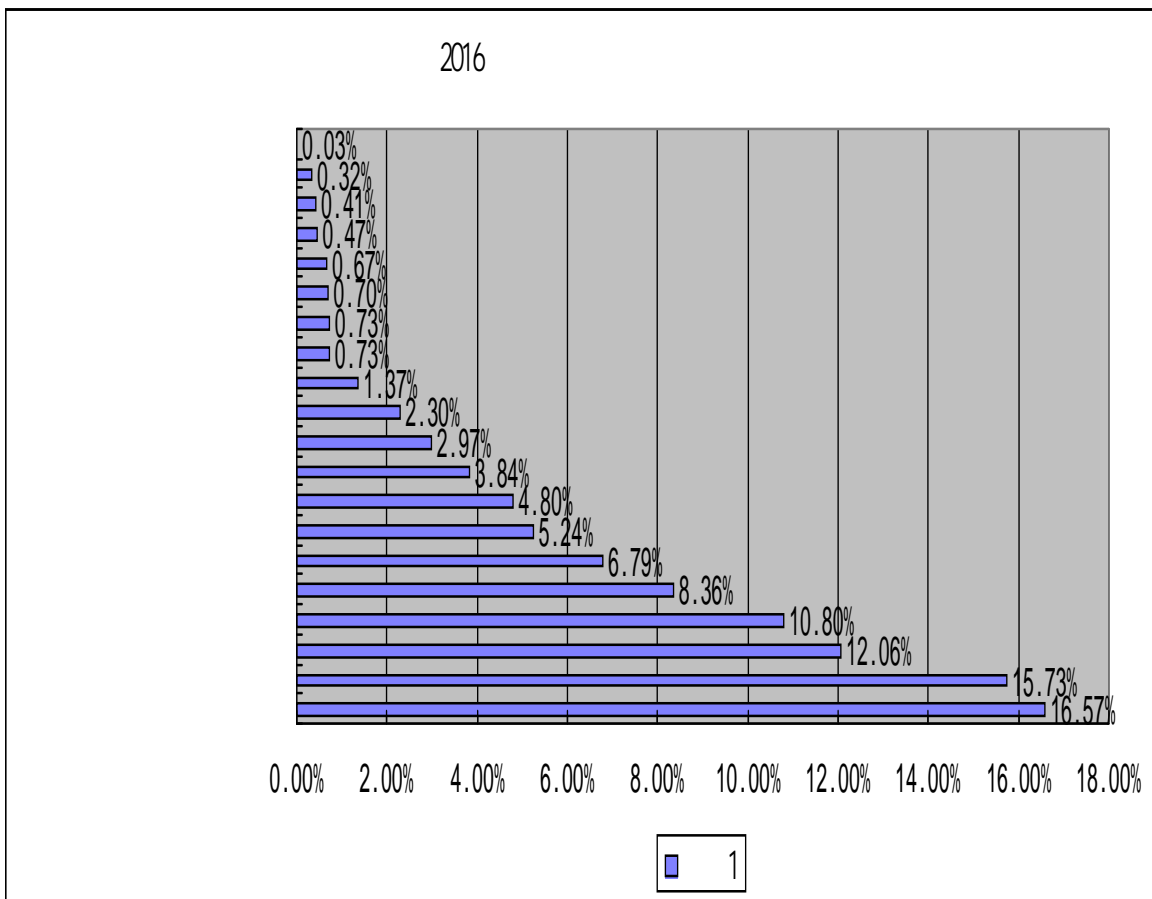
8.36% 6.79% 5.24% 3-1

6.92% 3.94%

2.81% 15.45%

3.01% 1.57%

3-1



3-1 2016

	2016	2015	2014	
	12.06%	5.13%	6.27%	6.92%
	4.80%	0.86%	3.05%	3.94%
	15.73%	12.92%	8.09%	2.81%
	5.24%	2.79%	3.97%	2.45%

	2.30%	0.28%	0.69%	2.02%
	2.97%	1.07%	1.92%	1.90%
	6.79%	5.48%	3.80%	1.31%
	16.57%	15.54%	19.10%	1.03%
	0.41%	0.14%	0.20%	0.27%
	0.32%	0.14%	0.49%	0.18%
	10.80%	10.64%	10.32%	0.16%
	0.03%	0.00%	0.30%	0.03%
	0.00%	0.00%	0.00%	0.00%
	0.70%	0.72%	0.73%	-0.02%
	0.47%	0.52%	0.59%	-0.05%
	0.73%	0.90%	0.42%	-0.17%
	8.36%	9.47%	8.82%	-1.12%
	0.73%	1.86%	1.05%	-1.13%
	0.67%	2.24%	5.36%	-1.57%
	1.37%	4.37%	0.99%	-3.01%
	3.84%	19.29%	18.53%	-15.45%

3-1 2016

2016
9.14%
2.24%
0.58% 0.35%

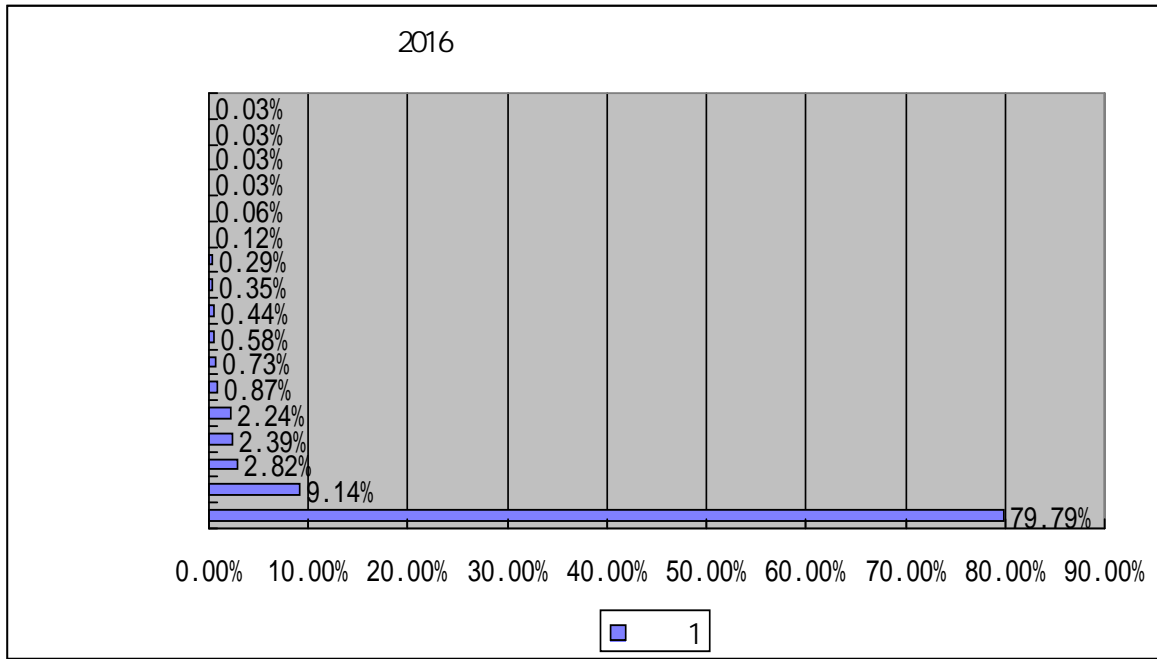
79.79%
2.82% 2.39%
0.87% 0.73%

3-2 3-2

	16	15	14	
	79.79%	78.54%	79.06%	1.25%
	9.14%	8.78%	7.87%	0.36%
	2.82%	2.72%	3.05%	0.10%
	2.39%	3.31%	2.23%	-0.92%
	2.24%	5.55%	5.75%	-3.30%
	0.87%	0.28%	0.36%	0.60%

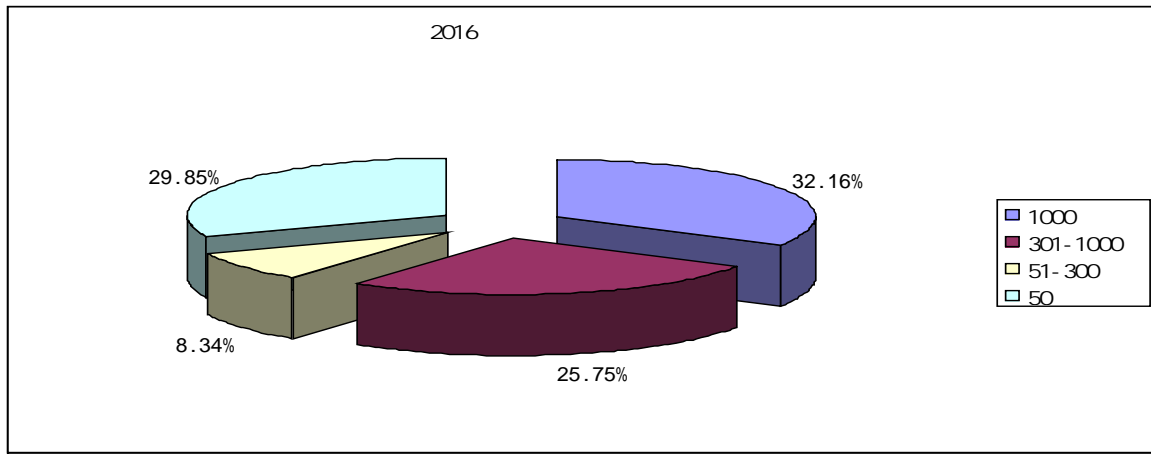
	0.73%	0.38%	0.45%	0.35%
	0.58%	0.03%	0.04%	0.55%
	0.44%	0.00%	0.00%	0.44%
	0.35%	0.17%	0.45%	0.18%
	0.29%	0.17%	0.24%	0.12%
	0.12%	0.00%	1.82%	0.12%
	0.06%	0.00%	0.02%	0.06%
	0.03%	0.00%	0.06%	0.03%
	0.03%	0.00%	0.02%	0.03%

3-2 2016



3-2 2016

2016		1000	
29.85%	50	29.85%	3-3



3-3 2016

2016

20.65%

18.17%

15.93% 10.28% 9.76% 6.93% 6.38%

10.28%

13.97%

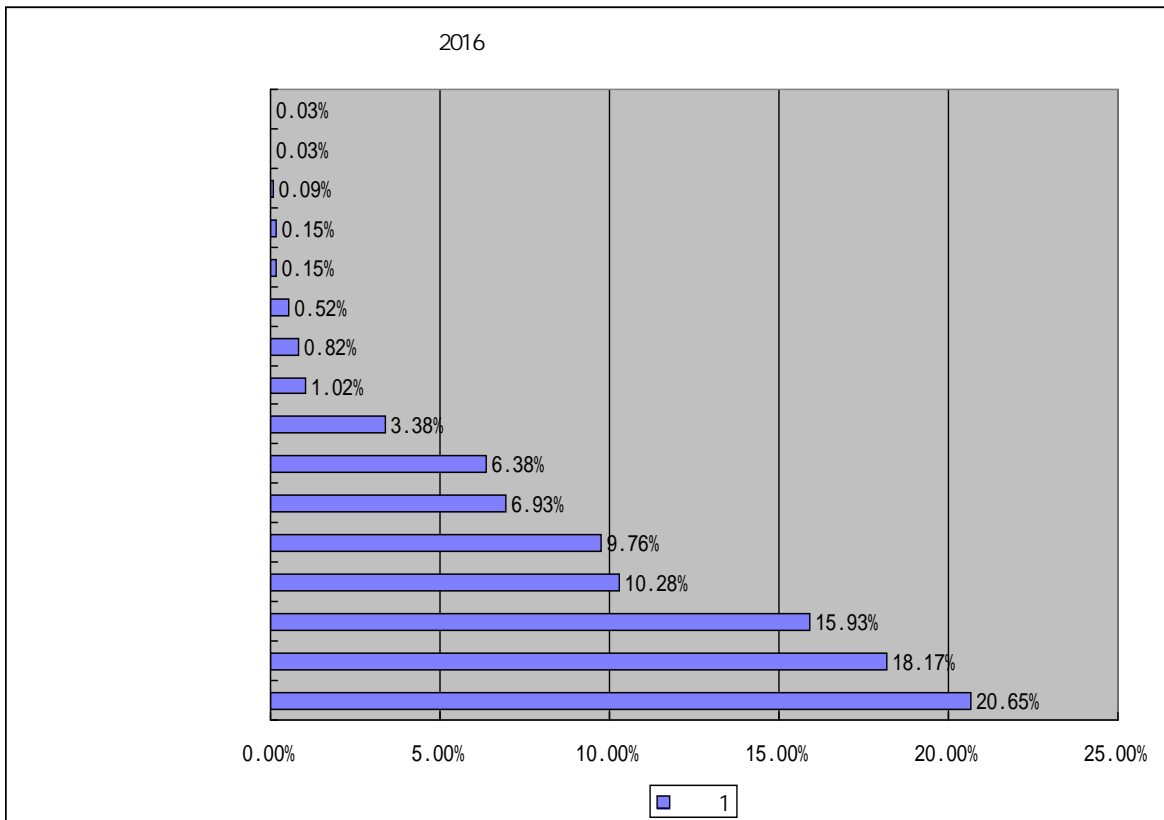
3-3

3-4

	2016	2016	2015	2014	
	709	20.65%	34.62%	13.11%	-13.97%
	624	18.17%	19.43%	21.08%	-1.26%
	547	15.93%	20.81%	29.35%	-4.88%
	353	10.28%	0.00%	9.67%	10.28%
	335	9.76%	2.17%	5.48%	7.59%
	238	6.93%	3.55%	9.00%	3.38%
	219	6.38%	0.00%	0.02%	6.38%
	116	3.38%	0.00%	1.86%	3.38%
	35	1.02%	1.24%	2.83%	-0.22%
	28	0.82%	0.38%	0.45%	0.44%
	18	0.52%	1.72%	1.66%	-1.20%
	5	0.15%	0.00%	0.04%	0.15%

	5	0.15%	0.07%	0.00%	0.08%
	3	0.09%	0.10%	0.06%	-0.02%
	1	0.03%	10.27%	0.02%	-10.24%
	1	0.03%	0.00%	0.02%	0.03%
	0	0.00%	0.00%	0.00%	0.00%
	0	0.00%	0.00%	0.02%	0.00%

3-3 2016



3-4 2016

2016

30

3-4

--	--	--	--

1		16	
2		17	
3		18	
4		19	
5		20	
6		21	
7		22	
8		23	
9		24	
10		25	()
11		26	
12		27	
13		28	
14		29	
15		30	

3-4 2016

30

2016

3921

3813

1890

1920

1960

3-5

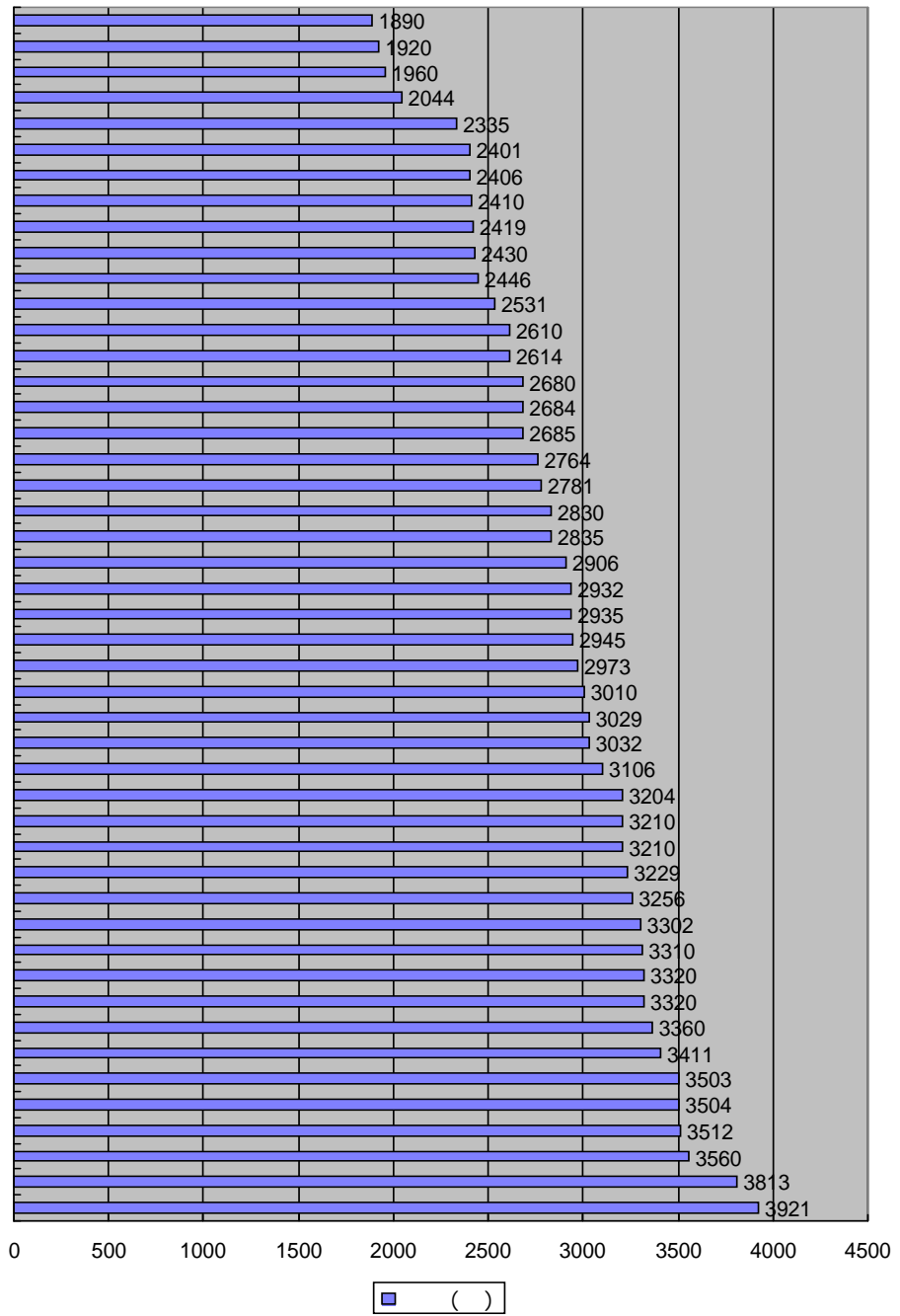
3-5

		()			()
1		3921	25		2932
2		3813	26		2906
3		3560	27		2835
4		3512	28		2830
5		3504	29		2781
6		3503	30		2764

7		3411	31		2685
8		3360	32		2684
9		3320	33		2680
10		3320	34		2614
11		3310	35		2610
12		3302	36		2531
13		3256	37		2446
14		3229	38		2430
15		3210	39		2419
16		3210	40		2410
17		3204	41		2406
18		3106	42		2401
19		3032	43		2335
20		3029	44		2044
21		3010	45		1960
22		2973	46		1920
23		2945	47		1890
24		2935			

3-5

2016



3-5

2016

2016

2016

10

2016

2017

11

5

1000

11 18

2017

30

12

20

50

2017

2017

PPT

80

QQ

100

4-8

2016

24.9

249

2016

11

1000

2016

4-6

21

"

"

10

60

22

20

"

"

20

11

1

" BCF

"

11

35

23

“ ”

“ ”

“ ”

“ ”

“

→ → → ”

“

”

“ ”

,

“411

”

“321

”

“ ”

“2121”

“244”

“

”

“

”

“

+

”

“

”